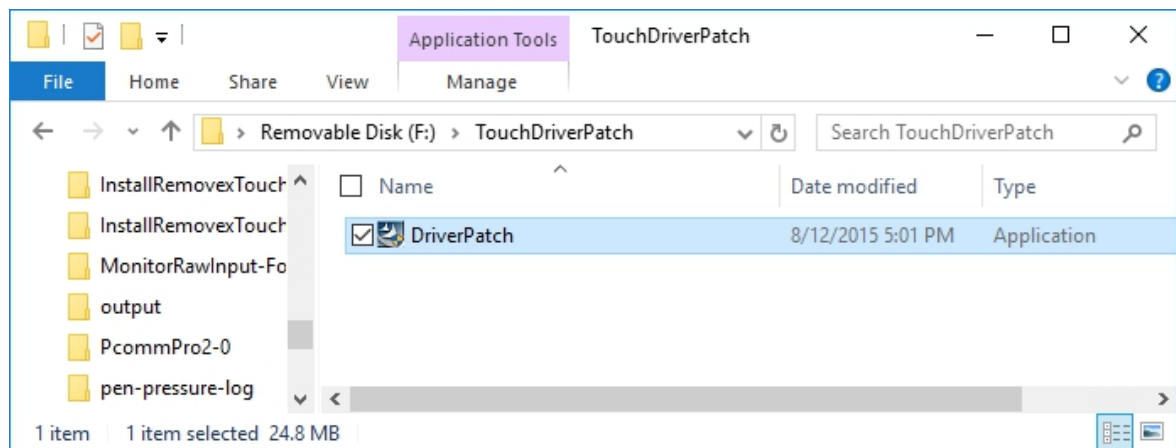


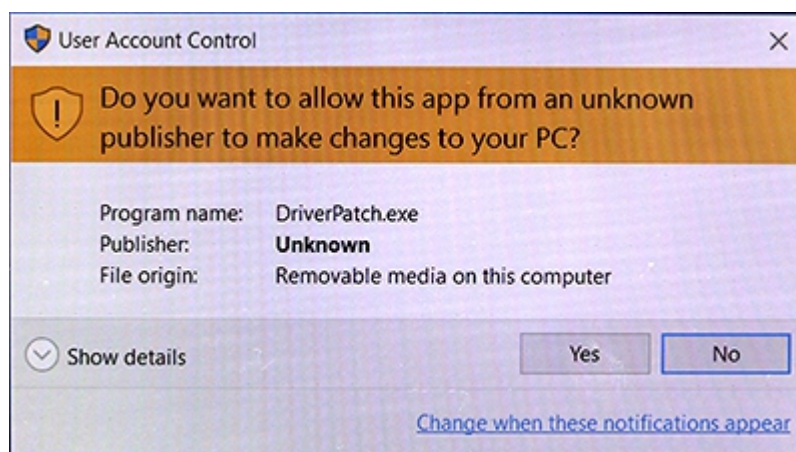
How to switch touch device driver

> Download the patch

1. Decompress the zip file.
2. Click the “DriverPatch.exe”



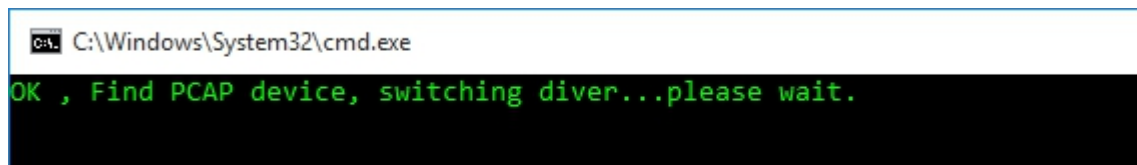
3. Please click “Yes “ button , if the “User Account Control” dialog is pop-up.



4. If your system has touch device that installed with eGalaxTouch driver,

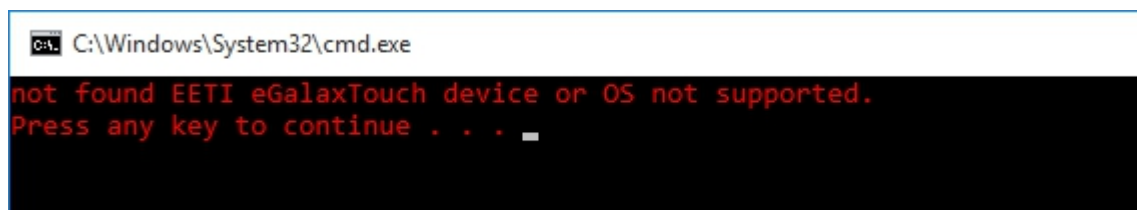
you will see a message like the below picture. And the tool starts to switch touch device with inbox (native) driver.

If success, the window will close automatically.



```
C:\Windows\System32\cmd.exe
OK , Find PCAP device, switching diver...please wait.
```

If the tool cannot find the EETI touch device with eGalaxTouch driver or the Windows is not Windows 10, you will see an error message like below picture.



```
C:\Windows\System32\cmd.exe
not found EETI eGalaxTouch device or OS not supported.
Press any key to continue . . .
```

After apply the new driver, the mult-touch device should work correctly.